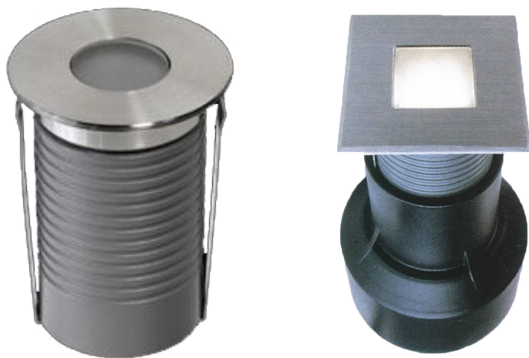


in grade



oslo

TUCSON

.5/2W LED

IG14



TUCSON IG14 :

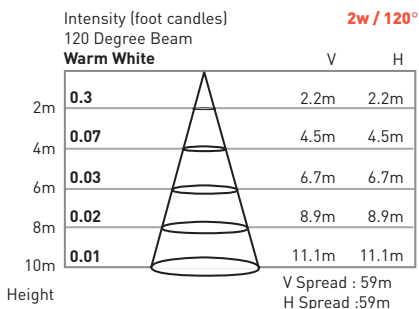
The TUCSON IG14 Series of LED In Grade fixtures are great marker lights for any location. These compact, wide beam spread LED fixtures put out a nice soft indirect light that makes them perfect to lay down for pathways to mark out the path. Comes with optional PVC mounting sleeve.

- 5-year warranty
- Long life : 50,000 hours

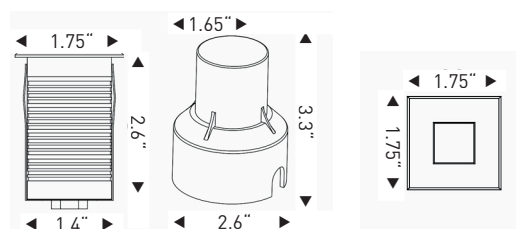
SPECIFICATIONS

Housing	Die cast aluminum, gray powder coat
Trim Ring	316# stainless steel
Glass	Step-tempered clear glass T=5mm
Loading Capacity	Exert force of Ø $\frac{1}{2}$ =250 pounds
Lens	Optical lens efficiency \geq 85%
Cable Gland	IP68 PG-9 copper and nickel coated
Waterproof Seal	Molded shaped double silicone seal
LED	0.5W —CREE XP-E 2W —OSRAM
Driver	Single color —1 circuit
Cord	6 ft
Cord Termination	OSLO Warm White —Tinned wire ends
Mounting Sleeve	032 PVC

PHOTOMETRICS



DIMENSIONS



Model Number	LED Array	Input Voltage	Color	Beam Angle	Trim Ring	Max Power	LUM Flux
IG14-L1.5-1AWF-S-06HW	1 x .5W	12VAC	Warm White 3000K	120°	Round	0.8W	9.6
IG14S-L1.5-1AWF-S-06HW	1 x .5W	12VAC	Warm White 3000K	120°	Square	0.8W	9.6
IG14-L12-1AWF-S-06HW	1 x 2W	12VAC	Warm White 3000K	120°	Round	2.5W	25
IG14S-L12-1AWF-S-06HW	1 x 2W	12VAC	Warm White 3000K	120°	Square	2.5W	25