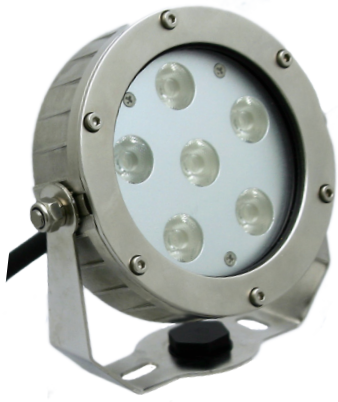


MANTA RAY

12W LED

MR5



STAND-MR5
optional tripod stand



SPECIAL ORDER (RGB only)
allow extended lead time

MANTA RAY MR5 :

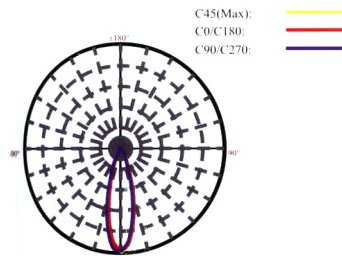
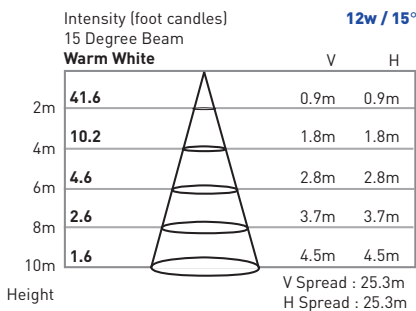
The MANTA RAY MR5 underwater line of fixtures are perfect for medium size jobs. Smaller size means it can be used in tight quarters, and its narrow beam make it perfect for spot lighting jobs. Use the optional tripod stand (STAND-MR5) for more installation flexibility.

- 5-year warranty
- Long life : 50,000 hours
- NOTE : MUST BE INSTALLED UNDERWATER to prevent light from overheating

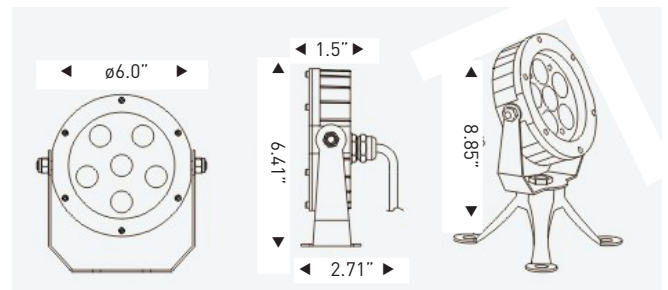
SPECIFICATIONS

Housing & Bracket	316# stainless steel
Front Cover	316L# stainless steel
Glass	Step-tempered clear glass T=5mm
Cable Gland	IP68 PG-11 copper and nickel coated
Waterproof Seal	Molded shaped silicon seal under front cover Silicon glue encasing LEDs, lens and PCB
PCB	Coefficient of heat conductivity ≥ 2.0w/mk
Lens	Optical lens efficiency ≥ 85%
Driver	Single color —1 circuit RGB 3in1 —3 circuits
Cord	20 ft
Cord Termination	OSLO WHITE —Tinned wire ends RIO RGB —Male IP68 Quick-Connect
Environment	Water temperature : -4°~104°F Less than 1 meter depth

PHOTOMETRICS



DIMENSIONS



Model Number	LED Array	Input Voltage	Color	Beam Angle	Cord Termination	Max Power	LUM Flux
MR5-L62-1AWA-S-20HW	6 x 2W	12VAC	Warm White 3000K	15°	2-wire	11.2W	520
MR5-L62-1ACA-S-20HW	6 x 2W	12VAC	Cool White 6000K	15°	2-wire	11.2W	600
MR5-L62-2DXB-S-201M	6 x 2W	24VDC	RGB	25°	Male QC Plug	17.3W	Variable

→Table of Contents

