

flex light

oslo

TAURUS

LED Module

M2



TAURUS M2 :

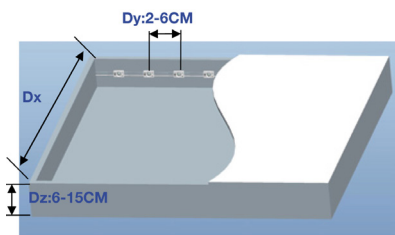
The Taurus M2 line of LED modules are a high powered SMD 5050 LED. Ideal for bigger double sided signs and areas where more light output is necessary. Ideal at 3-7 inches on single sided signs, and with their wider beam spread, they are perfect for double sided signs as well at 6-14 inch depth.

- IP65 waterproof 5050 LED
- 2 year warranty

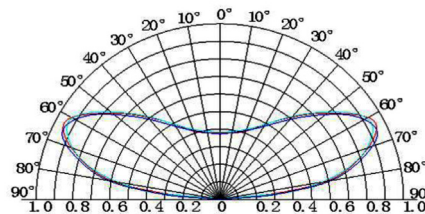
SPECIFICATIONS

Housing	Injection molded PVC
Input Voltage	12V DC
Length	M2-11D 20 modules / 2 modules per foot / 10.67 ft Modules 6.7" on center 5.2" of wire between modules
Lifespan	50,000 hours
Working Temp	-40°C—50°C
Max Connection	20 modules
IP Rating	IP 65
Mounting Method	3M adhesive tape Provided No 2 316 Screw

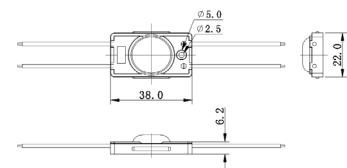
Double Sided Sign Recommendation



Light Distribution



M2-11D



Model Number	LED Type	Color	Beam Angle	Wattage/Module	Max run Wattage	Cord Termination	LUM Flux/module
M2-11D-CW	SMD5050	Cool White 5500-6500	160	1.32	26.4W	2-wire	80
M2-11D-CT	SMD5050	True White 8000-10000	160	1.32	26.4W	2-wire	80