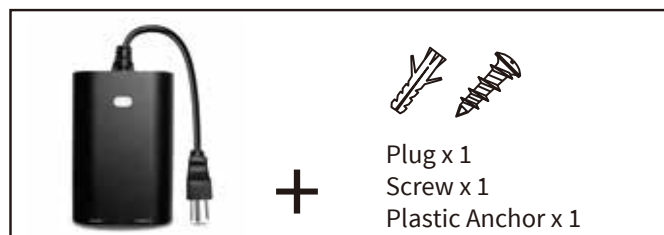




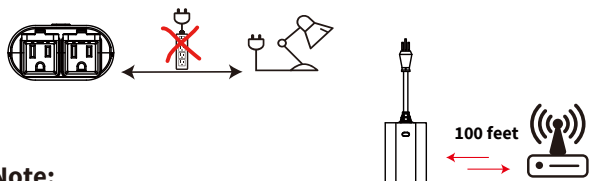
• **GEMINI GM-8** •
Wi-Fi Outdoor Plug
(2 Outlets)



For outdoor use.
IP65 Rated

- (A) Manual / Program button**
Single press: Manually turn on/off your device simultaneously.
Hold 5s: Initiate App-configured Mode
- (B) Smart Outlet * 2**
These are your smart outlets that will be included in your smart home.
- (C) Protector**
Insert in connector when not in use.

Note: Do not plug an extension cord into the GM-8.



Note: Your device may need to be within 100 feet of the controller to be included. If so, include the device to the network within 10 feet of the controller and relocate it to the desired position in your home. Be sure to refresh the network if the device is included in this manner.

APP Connection



QR code



Smart Life



Amazon-Echo



Google-Home

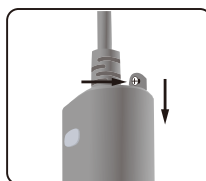
- Note:** Your device needs to be installed in the network coverage of your home router.
1. Please scan the QR code to download the application “**Smart Life**”.
 2. If you cannot download Smart Life app, please search “**Smart Life**” on Google Play (for Android phone) or Apple Store (for iOS phone) to download.
After you download the Smart Life App and register a new account, please follow the instructions below to set up your smart switch.
 3. The smart switch can be also used with **Amazon Echo** and **Google Home**. Please scan the QR code below and follow the instructions if you have any trouble pairing with them.

Introduction

The illuminFx GM-8 is an enabled 15A outdoor smart plug designed for use for most residential lighting and motor applications. It's compatible with LED, halogen, incandescent, xenon, fluorescent and compact fluorescent bulbs. Works with Amazon Alexa, Google Assistant, and many other apps.
With the GM-8, you can use the free Smart Home App, or voice control by Alexa and Google Assistant to operate your devices in your home.

Specifications

- Power: 120V AC, 60Hz
- Total (Both Outlets): 15 Amp Max
- Wireless Frequency: 2.4GHz
- Wireless Standard: IEEE802.11b/g/n
- Operating Temp: -4°F~122° F
- Please vertically hang on the wall.



Use our screws and anchor to lock it in the wall.(optional)



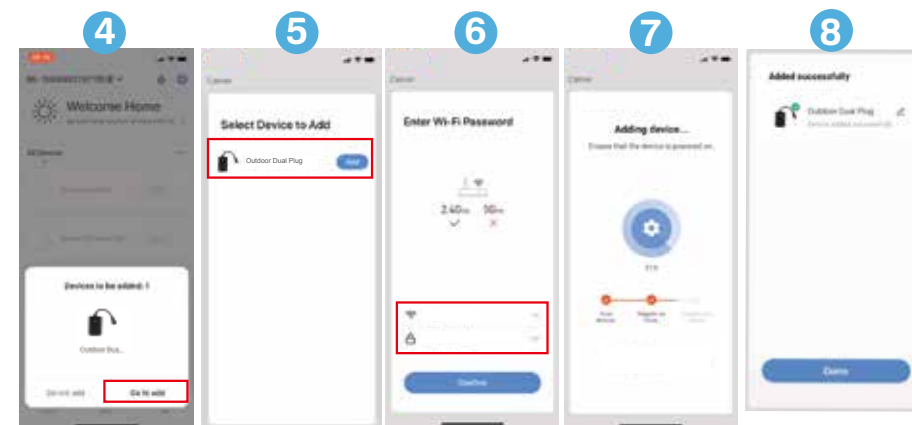
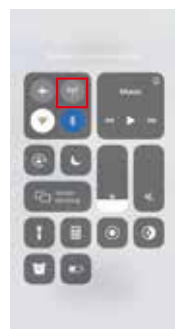
When the white LED is flashing slowing (AP mode), please hold the button 5 seconds until the LED switches to rapidly blinking--Back to EASY MODE.

Note:

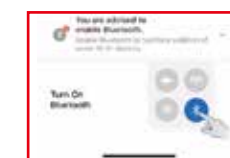
- 1) Our products supports Bluetooth quick-fit and 2.4GHz Wi-Fi network.
- 2) 3 connection network modes: Bluetooth quick-fit Mode, Easy Mode, AP Mode. Choose the most suitable mode to configure the network.
- 3) Please operate quickly when the white LED indicator blinks rapidly.
- 4) When indicator flash enters the network, complete standard operation within the 3 minutes.
- 5) If you failed to connect with Wi-Fi network, please try to **operate several times more.**

▶ Bluetooth quick-fit Mode ◀

- 1** Plug-in the GM-8 directly into a wall outlet.
Once plugged in, it will enter into the **Bluetooth auto-connection mode.**
The auto-connection mode begins with the LED on the GM-9 blinking. The LED will blink for 3 minutes. If the LED is not blinking, hold down the button for 5 seconds to initiate the connection mode.
- 2** Turn on your phones Bluetooth.
- 3** Tap '+' to add this plug in the “**Smart Life**” APP.

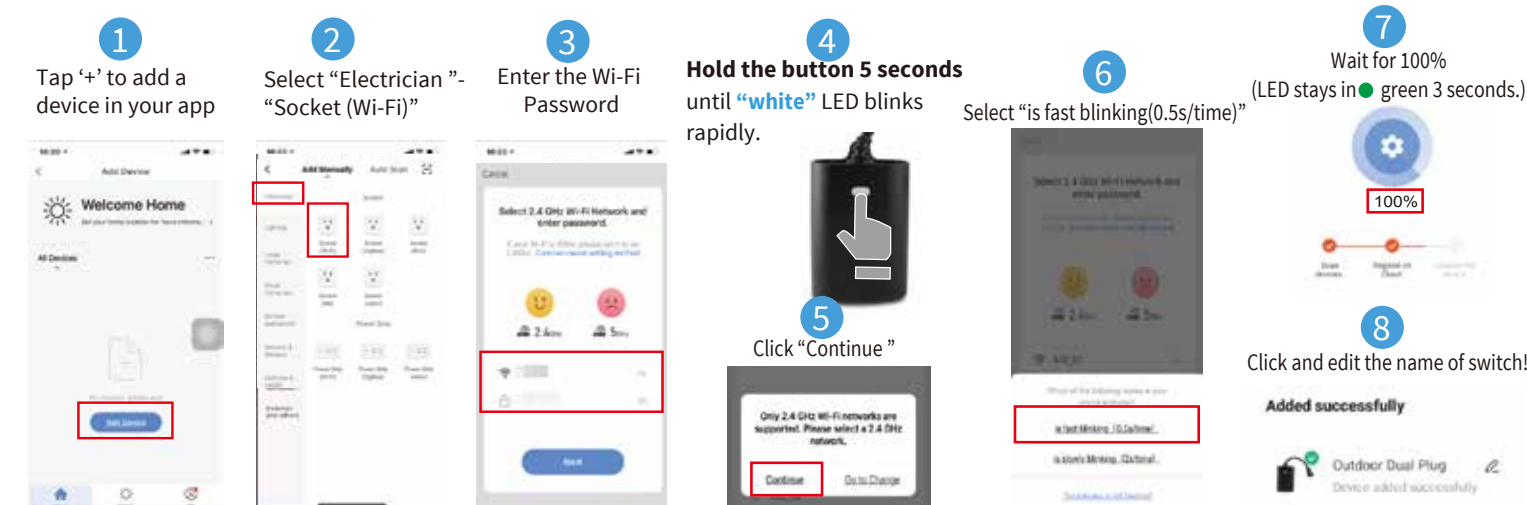


- 4: You'll see "Devices to be added" Click on "Go to Add"
- 5: Click "Add"
- 6: Enter the Wi-Fi Password of your network (Your phone should already be connected to this same network first)
- 7: Wait for the App to connect to your Wi-Fi
- 8: Click on the new GM-8 you just added, and you can start you using it now.



When Bluetooth is off, the APP will remind: "You are advised to enable Bluetooth".

▶ Easy Mode ◀

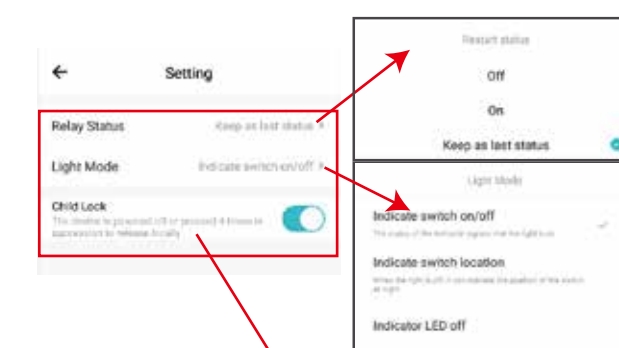


FCC warning:

This device complies with Part 15 of the FCC Rules. Operation is subject to the following two conditions:
(1) this device may not cause harmful interference, and
(2) this device must accept any interference received, including interference that may cause undesired operation.
changes or modifications not expressly approved by the party responsible for compliance could void the user's authority to operate the equipment.
NOTE: This equipment has been tested and found to comply with the limits for a Class B digital device, pursuant to Part 15 of the FCC Rules. These limits are designed to provide reasonable protection against harmful interference in a residential installation. This equipment generates, uses and can radiate radio frequency energy and, if not installed and used in accordance with the instructions, may cause harmful interference to radio communications. However, there is no guarantee that interference will not occur in a particular installation. If this equipment does cause harmful interference to radio or television reception, which can be determined by turning the equipment off and on, the user is encouraged to try to correct the interference by one or more of the following measures:
-- Reorient or relocate the receiving antenna.
-- Increase the separation between the equipment and receiver.
-- Connect the equipment into an outlet on a circuit different from that to which the receiver is connected.
-- Consult the dealer or an experienced radio/TV technician for help.

FCC Radiation Exposure Statement:

This equipment complies with FCC radiation exposure limits set forth for an uncontrolled environment.
This transmitter must not be co-located or operating in conjunction with any other antenna or transmitter.
This equipment should be installed and operated with minimum distance 20cm between the radiator& your body.



Child lock

Child lock
Child Lock
The device is prevented all or partial if power is disconnected to protect safety.

Unlock operation: click unlock on the APP or press the device button 4 times quickly.



⚠ CAUTION - PLEASE READ!

This device (GM-8) is intended for installation in accordance with the National Electric Code and local regulations in the United States, or the Canadian Electrical Code and local regulations in Canada. If you are unsure or uncomfortable about performing this installation consult a qualified electrician.

⚠ MEDICAL EQUIPMENT

Please DO NOT use this plug to control Medical or Life Support equipment. This device should never be used to control the On/Off status of Medical and/or Life Support equipment.

⚠ OTHER WARNINGS

- Risk of Fire
- Risk of Electrical Shock
- Risk of Burns