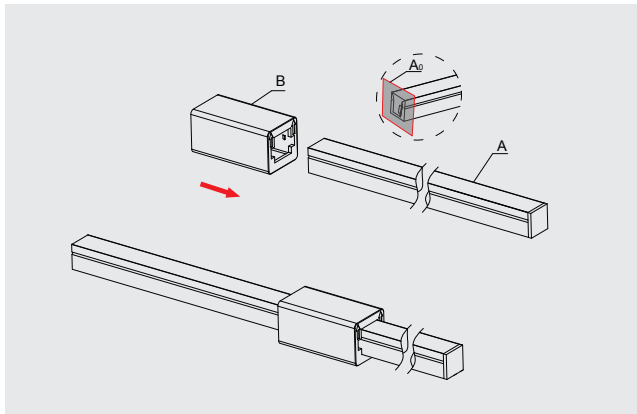
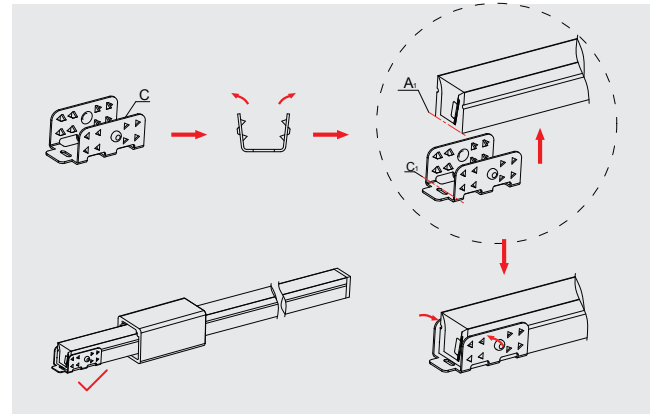


Neonflex 1010 PRO Connecting Method



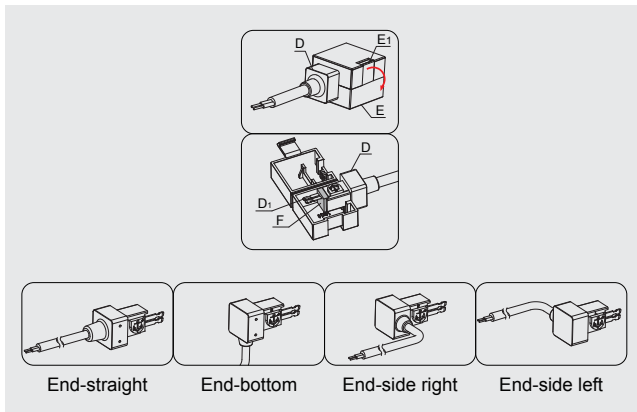
Connection with end cap with cables - transparent cover

- 1 Take out the Neon flex which has been cut. Please note that the cross section A0 must be flat. Take out the plastic cover B, and put it on the correct position of Neon along the direction of arrow.



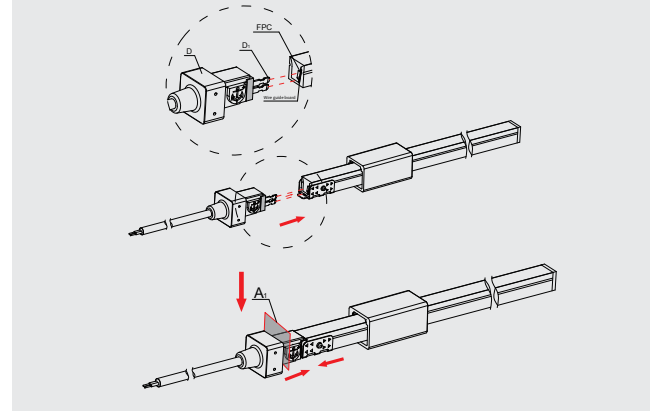
Connection with end cap with cables - hardware stabbed buckle

- 2 Take out the hardware stabbed buckle and split it into a certain radian (more than 90°). Put the stabbed buckle into the front end of Neon along bottom-up direction. Please note that the end face of buckle C1 should be flush with the surface A1 of Neon. Squeeze the buckle in the direction of Neon.



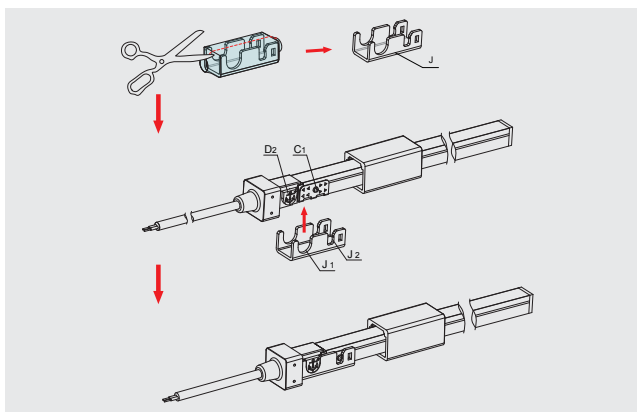
Connection with end cap with cables - connector plug

- 3 Take out the plug box E from packing bag and break the plastic buckle of E1 downward. Take out the plug D from the plug box. Remark: because of different wiring method of plug, it should be subject to the material object when using. Pay attention to the contact pin D1 of the plug D: it is covered by the silicone gasket F. If the silicone gasket has displacement, please use the tool to reset it but not use tissue or cloth to wipe the silicone grease on the surface of silicone. Or it will destroy connector's waterproof function.



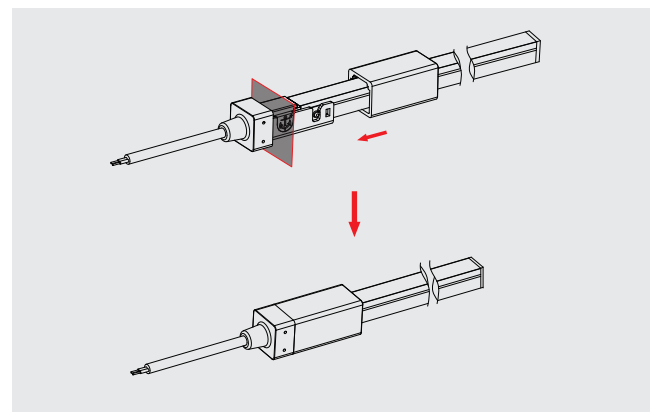
Connection with end cap with cables - plug

- 4 Take out the plug D and adjust its direction to be consistent with the Neon. Then stick the the contact pin D1 into the gap between FPC and wire guide board of Neon and push it to the end towards the right. Ensure the plug D is flush with the surface A1 of Neon.



Connection with end cap with cables-hardware U - type buckle

- 5 Split the PE protective film by proper tools and take out the hardware U-type buckle J. Take out the assembled Neon and put the U-type buckle J into the Neon. Please note that the bumps of the plug D2 and hardware stabbed buckle C1 should be aimed at the J1 and J2 slots of U-type buckle. Then press it down hard to ensure the bump end-face of plug D2 works closely with the end-face J1 of hardware U-type buckle. Then put the bump of hardware stabbed buckle C1 into slots J2 of U-type buckle and adjust it to keep flat.



Connection with end cap with cables - hardware U-type buckle

- 6 Push the transparent cover into the end as the direction according to the picture. When you hear the sound of chucking plastics, it is finished.