

LANDSCAPE LIGHTING **TECHNIQUES**

LANDSCAPE LIGHTING GUIDE



OMEGAPRO

LANDSCAPE LIGHTING TECHNIQUES

This guide shows examples of different landscape lighting techniques and which OmegaPro fixtures to use for each one. Contact OmegaPro today for more information about our products and expert help on your next landscape lighting project.

GETTING STARTED ▼

LED LAMPS

CHOOSING YOUR LAMP

All OmegaPro fixtures are low voltage lighting products and can be used with OmegaPro LED lamps for a more efficient landscape fixture.

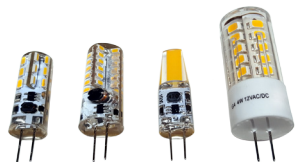
Each fixture uses a specific type of lamp:

OB-1/3, DL-1 : MR16 lamp

OB-2, AL Series : G4 lamp

OB-4 : MR11 lamp

Each type of lamp comes in different color temperatures (2800K, 4000K, or 6500K). In addition, the MR11 and MR16 lamps come in different beam spread options as well (20°, 40°, 60°, 120°). Check out www.omegapro1.com for more specific information.



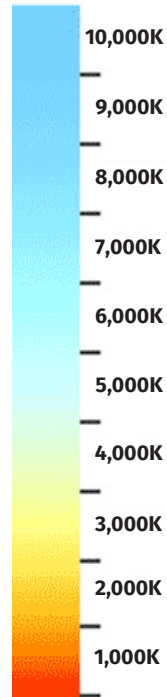
COLOR TEMP

WHICH COLOR TO CHOOSE?

Color with a lower kelvin appears more red, while a higher number represents a more blue look. The temperature scale begins around the 1000K range, which you can equate to the look of a candle flame or match fire. This is actually an easy way to remember the Kelvin scale — the lower numbers are related to fire, which is red and orange.

As temperature increases, light appears more yellow, then white, then blue. Incandescent bulbs and halogen lights are found around the 3000K range, and direct sunlight is measured at 4800K.

If you're looking for a more natural look, the appearance of daylight is measured at 5600K. Any temperature higher than 5600K begins to appear more blue. A cloudy sky is measured at 7000K, while a clear blue sky is 10,000K.

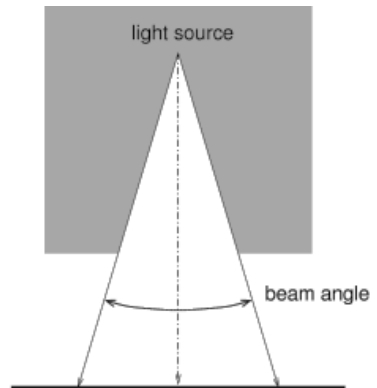


BEAM SPREAD

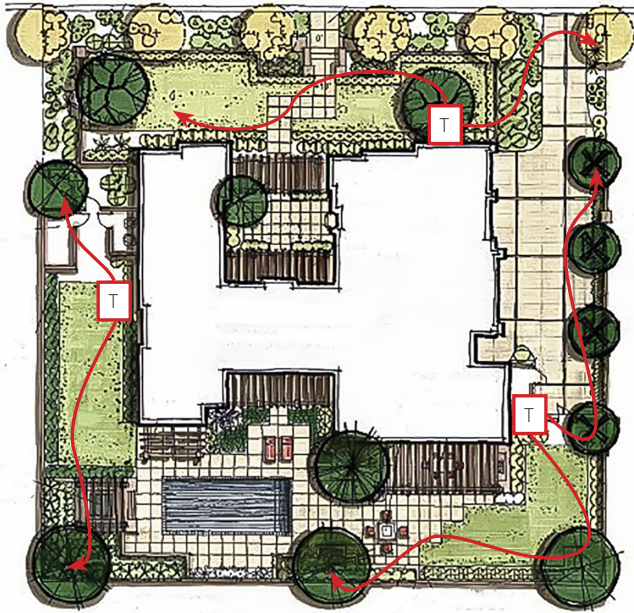
CHOOSING YOUR BEAM

The beam angle is the degree of width that light emanates from a light source. Specifically: The angle between those points on opposite sides of the beam axis where the intensity drops to 50% of maximum.

Examples include flood light, spot light, narrow spot light, and wide flood light. Each is a way of stating LED beam angle. Typically a narrow beam angle is a 'spot' of light and a broader beam angle 'floods' an area with light, called a flood light.



SYSTEM LAYOUT



SINGLE TRANSFORMER

When a single transformer is necessary, it is important to center the transformer on the wattage load. If the project has 120 watts of power in both the front and back yard, a **TR-300** Omega Pro transformer should be centered between both the front and back yards. You want to try to eliminate any excessively long cable runs to each lighted area.

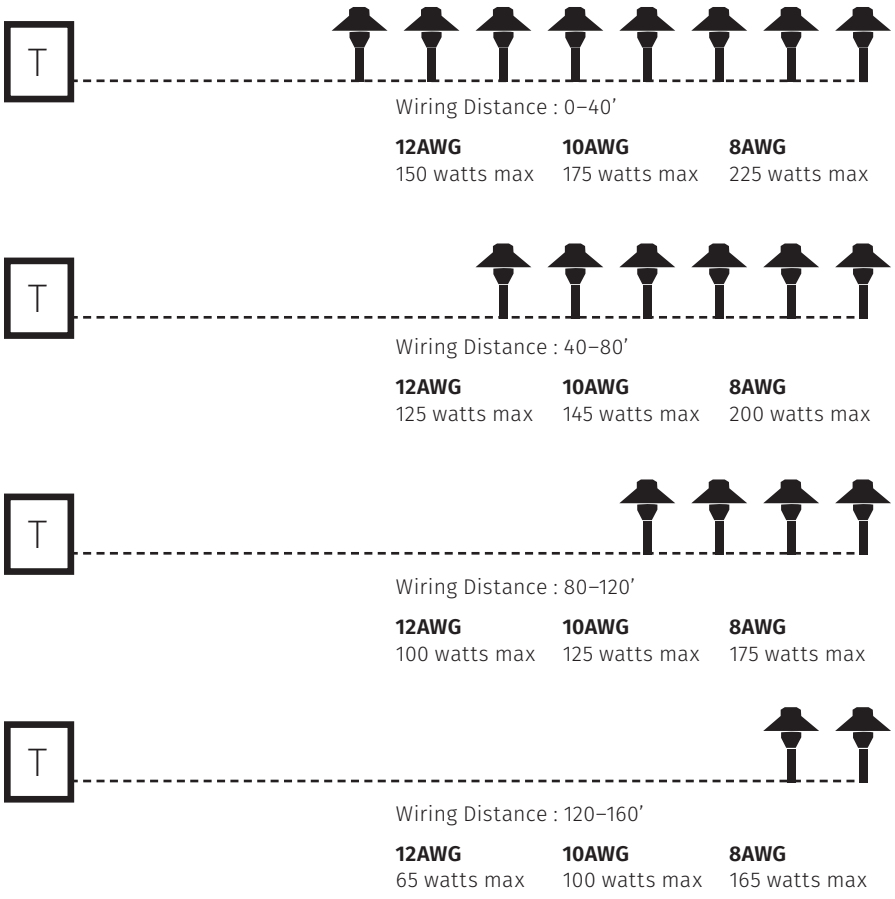
MULTIPLE TRANSFORMER

Much like using a single transformer, it is also important to reduce distance between the transformers and the lighting fixtures when there are multiple transformers. Don't just group all transformers together because of utility or visual considerations. ZONING is another layout consideration. This way you can individually control different sections or ZONES by controlling certain lighting areas with their own transformer, and switch controls.

WIRE GAUGE

LOADS PER CABLE

Below are some standard guideline examples. Add additional cable runs as necessary.



TRANSFORMER

TR-075

PRODUCT # PICTURED ▼



LOW VOLTAGE TRANSFORMER

Standard home power is typically 120VAC, which will require a low voltage transformer to convert that power to 12VAC to power OmegaPro LED lighting fixtures.

HOW TO CHOOSE

To determine which TR series low voltage transformer needed for your lighting project, simply add the total wattage of all the fixtures. It is also important to add ~20% capacity for future additions to the lighting project. OmegaPro offers 75, 150, 300, and 600 watt transformers as well as timers and other accessories to get the most out of your lighting project.



OMEGAPRO RECOMMENDATION



IG SERIES

INGRADE LIGHT

IG2-L12-1AWW-S-06HW

PRODUCT # PICTURED ▼

Grazing is used to emphasize the texture in a surface. In this case it was used to bring out the surface texture on a stone wall. To create this effect, the light source is placed within one foot of the surface and aiming the light up parallel to it.



WALL WASH

◀ LIGHTING TECHNIQUE

OMEGAPRO RECOMMENDATION



OB SERIES

INGRADE LIGHT

OB-2

PRODUCT # PICTURED ▼

Wall washing technique describes lighting of a surface to create a general soft wash of light. Fixtures are generally placed further from the surface to achieve less texture and more general lighting.



LIGHTING TECHNIQUE ►

UP LIGHTING

OMEGAPRO RECOMMENDATION



OB SERIES

BULLET LIGHT

OB-1

PRODUCT # PICTURED ▼

Uplighting is created by illuminating an object or surface from below to create a focal point. This creates a large amount of contrast on the object illuminated.



PATIO LIGHTING

◀ LIGHTING TECHNIQUE

OMEGAPRO RECOMMENDATION



PL SERIES

PATIO LIGHT

PL16-4824-120VBL-S14822

PRODUCT # PICTURED ▼

Patio light is as simple as hanging a string of patio lights over a deck or patio to create a warm inviting glow.



OMEGAPRO RECOMMENDATION



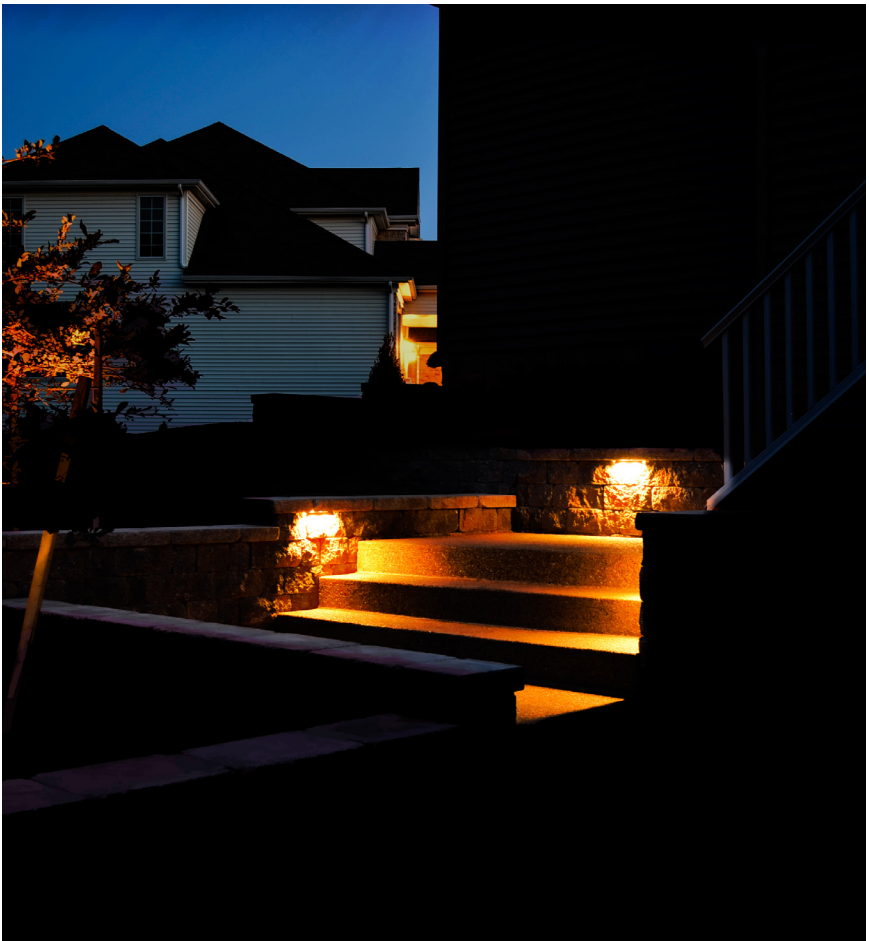
HL SERIES

STEP LIGHT

HL-1

PRODUCT # PICTURED ▼

Step lights can be used in both masonry and wood constructions to fully illuminate the steps, and are low profile so they can be easily hidden while still safely lighting steps on both entrances and decks of a home.



PATH LIGHTING

◀ LIGHTING TECHNIQUE

OMEGAPRO RECOMMENDATION



AL SERIES

PATH LIGHT

AL1-S18

PRODUCT # PICTURED ▼

Path lights are used to illuminate landscape locations such as flower beds, shrubs, and borders while also safely lighting the pathways. Typically they are placed 6'–8' from each other.



LIGHTING TECHNIQUE ►

TIKI LIGHTING

OMEGAPRO RECOMMENDATION



AL SERIES

IN GRADE LIGHT

AL3-S61

PRODUCT # PICTURED ▼

Tiki lights are a unique form of path light that allows you to use either the LED lamp inside or use the refillable kerosene chamber and wick to illuminate a space with natural light.



MOON LIGHTING

◀ LIGHTING TECHNIQUE

OMEGAPRO RECOMMENDATION



DL SERIES

DOWN LIGHT

DL-1

PRODUCT # PICTURED ▼

Down lights are placed up in the tree line pointing down to create a widespread illumination to recreate the effect of natural moon lighting.



OMEGAPRO RECOMMENDATION



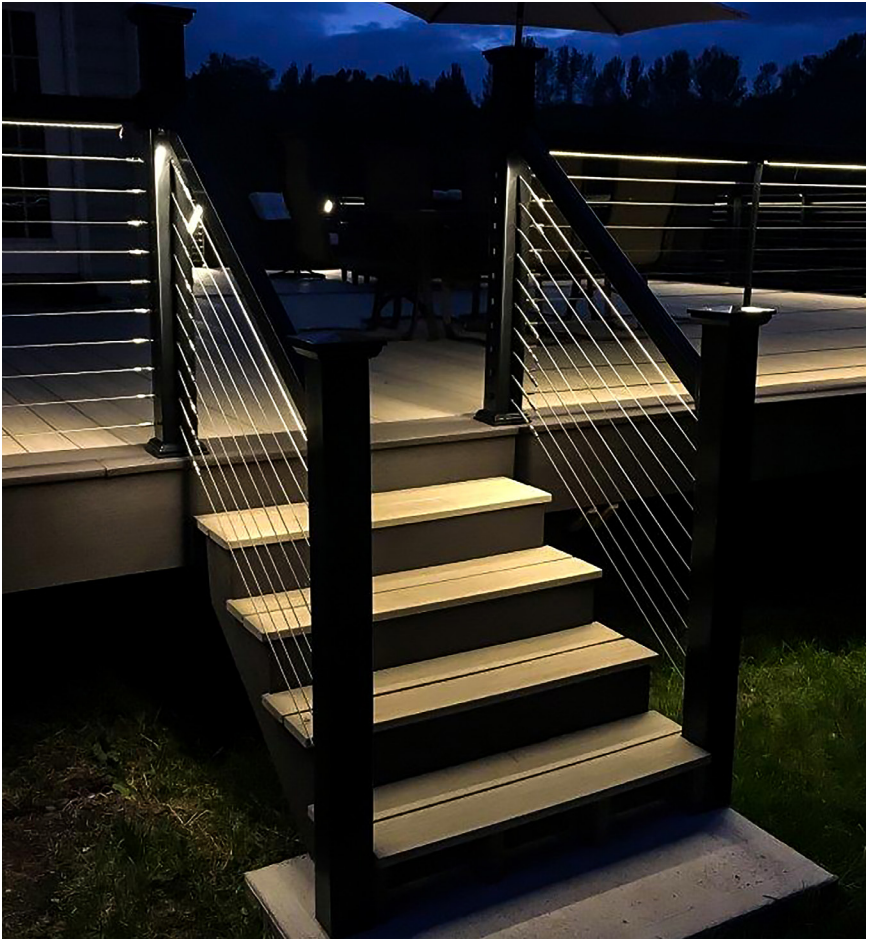
SF SERIES

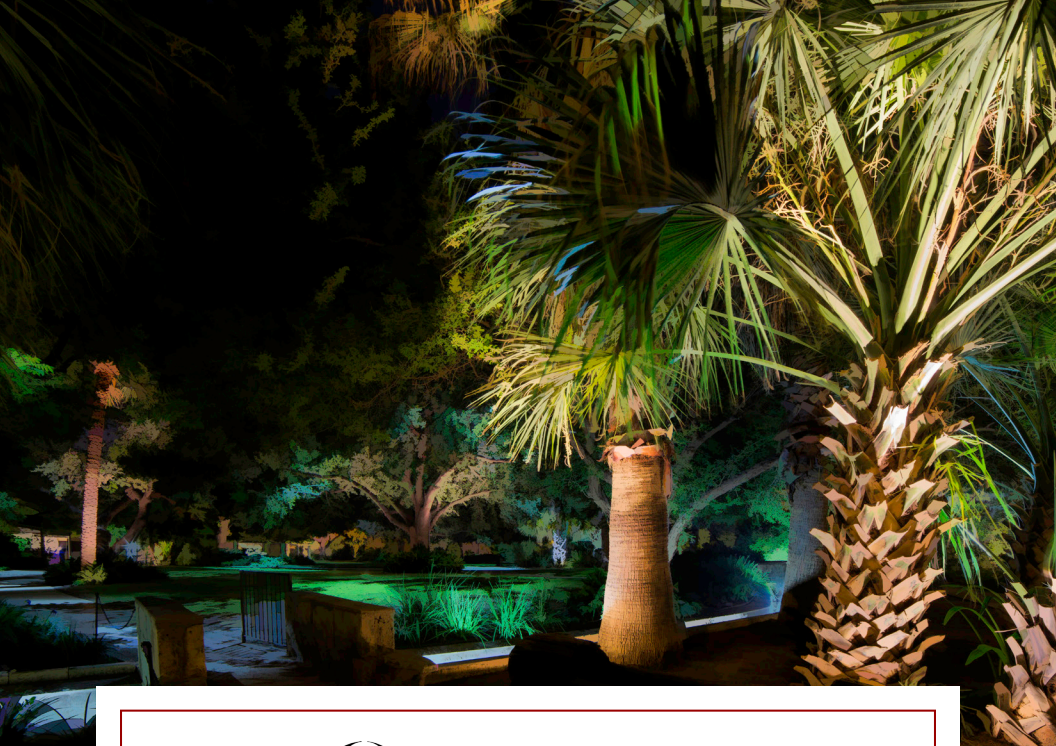
SLIMFLEX

SFT35-60-1-828-67

PRODUCT # PICTURED ▼

SlimFlex is a line of LED Tape Light products. They are a perfect low profile lighting product to illuminate banisters, walls, alcoves, steps, or many other applications.





OMEGAPRO

Low voltage landscape lighting products and expertise. Call us today for more information and help on your next outdoor lighting project!

omegapro1.com

illuminfX.com

Business Address

22 Harcourt Road
Rochester, New York 14606

(585) 254 – 8010 PHONE

(585) 254 – 8033 FAX

*Entire contents © illuminfX Lighting Systems.
All rights reserved. illuminfX reserves the right to
make changes to specifications at any time with or
without notice.*

*Reproduction in whole or in part without
permission is strictly prohibited.*