

# WiFi Plug

User Manual



illuminfx



## WiFi Smart Converter User Manual

Product Schematic

Function Key and Indicator Description  
Short press the power button, blue indicator lights up means power on; otherwise, it's power off.  
Short press the power button for about 5 seconds, blue indicator flashes rapidly (2 times/ per second) means the product begin enter into EZ(rapidly blink) mode.

Press 5s more in EZ mode, it will enter AP (Slowly blink) mode.

Technical Parameters

Maximum current: 10A

Rated voltage: 100-240V

Rated power: 2200W

Input voltage: 100-240V

Wireless Type: Wi-Fi 2.4GHz  
Operating temperature: -10°C - 60 °C  
Support system: Android \IOS

**Connect with "Smart Life"**  
**Use your phone to scan the QR code below or search "smart life" in application market to download and install the App**

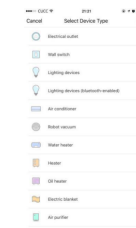


### Step 1: Registration and login "smart life" APP.

If you don't have the account of "Smart life" APP,register an account or sign in with cellphone number +verification code.This page describes the Registration process.

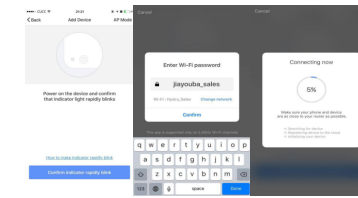
1. Tap "Register" from the interface;
2. It automatically pop-ups the window of "Privacy Policy", after you read completely and press "Agree" button;
3. The system will automatically determine your country/region. You can also select your country code by yourself. Enter the mobile No. or Email , and press the button of "Obtain verification code";
4. Enter verification code and set the password;

5. Press the button of "Completed" to finish the registration, then for start to create the family. Make sure your phone is connected to WiFi in your home. Click "+" in the upper right corner of the homepage and select "Electrical outlet" from the device type.

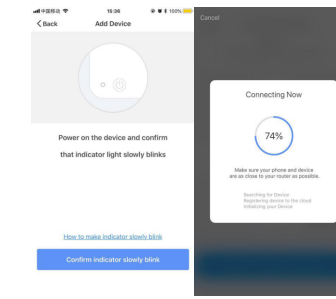


**Step 2:** Connect with the power supply, long press the power button more than 5 seconds until the blue indicator enters into the fast flash mode. Select and press the button of "confirm indicator rapidly blink".

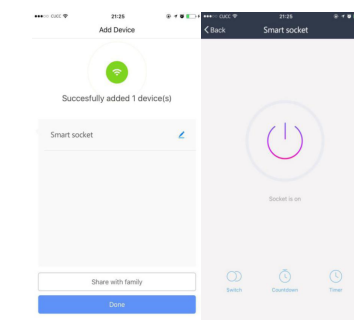
**Step 3:** Enter your WiFi password for your phone and click "Confirm" to enter the page of the search device.



While under AP mode, press the button " Confirm indicator slowly blink", and input the WiFi password to complete the connecting.

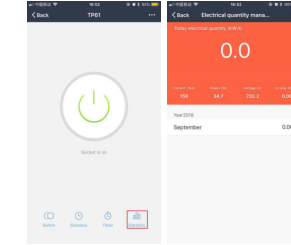


**Step 4:** Enter the device page, then complete the configuration



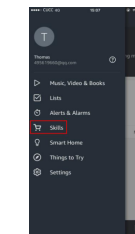
### Take use of Statistic Function:

Click the icon of "statistics" at the lower right corner ,it will enter the interface of "Electrical Quality Management". Check the current detailed data.

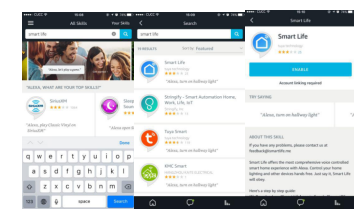


### How to use Amazon Echo to control your Smart devices?

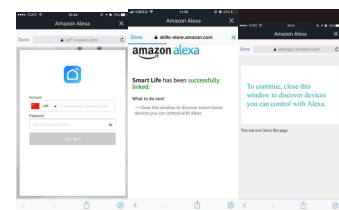
**Step 1:** Open the" Amazon Alexa"APP,then find the "Skills "button on the menu. Press it.



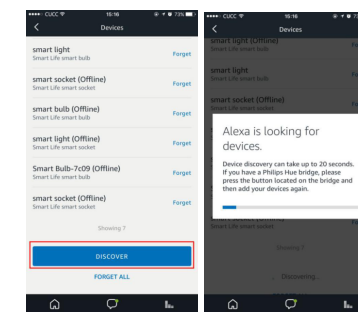
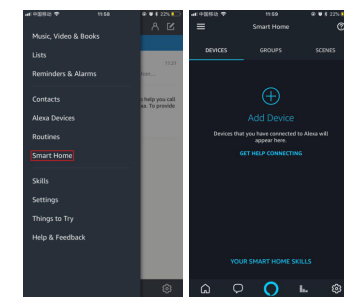
**Step 2:** Search the" Smartlife" and choose the first one, then Enable it.



**Step 3:** Select your country code and Enter your "Smart life" APP Account and Password, then press the "Link Now" button. When the Account success to login press the "Done" button.



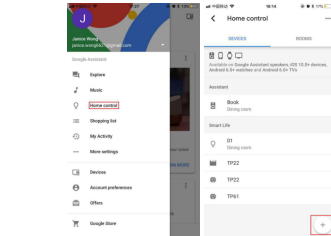
**Step 4:** Back to the menu, and press the "Smart home" button, then choose the "Devices", then press the "Discover" button.



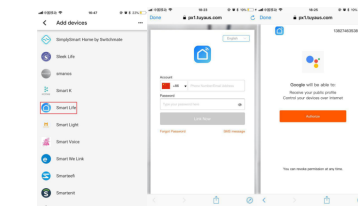
**Step 5:** Now you can use your Alexa to control your Smart devices, enjoy yourself.

### How to connect with Google Home?

1. Click the button of "Home Control" on the left side of Google Home Page just as the illustration;
2. Then Click the button "+" on the lower right corner to add devices;

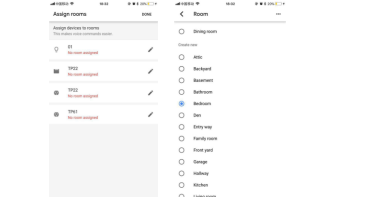


3. Choose "Smart Life" in the Add device list;
4. Please choose the country you living in, enter your account and password in the new window, then click the button " Link Now";
5. With the interface of Authorization, click the button "Authorize"



6. Then you will be asked to assign the rooms;

7. After you assign rooms for device, your device will be listed in the Home Control interface;



8. Now you can control these devices using Google Home. Take the bedroom light as an example, the supported voice are commanded as below:  
OK,google, turn on the bedroom light.  
OK,google, brighten the bedroom light.

### FAQ About WiFi Connection:

1. How to Connect WiFi of Smart Device with the Mobile?  
This device can only support 2.4G but not 5G, so please confirm the mobile and WiFi router under 2.4G.  
If there is both 2.4G & 5G in router, you can access the setting of router to shut off 5G network firstly.

- (1). Please keep the devices & mobile close to the WiFi router as possible, because the signal of 2.4G is easily to be interfered;
- (2). Also, if the set channel of router is same with others, in this case, it looks strong signal

but in fact it will bring the false signal; You can switch the transmission channel from 1~11; (3). Another factor is that the terminal devices connected with the router reach maximum.

2. How to Enter AP Mode of Smart Socket?  
Long press 8s to blink rapidly, then continue to long press 8s to enter slow blink mode for AP connection.

3. If it's still unresolved, what am I supposed to do?  
If it's still unresolved from the above FAQ, please try to share the WiFi Hot Spot from one mobile to another, and also connect the device through this WiFi Hot Spot, if it can be

connected, it proves that the smart devices run well but might the problem from router. Otherwise, it's the problem from the product.

